



***PARTICIPANTS  
GUIDEBOOK***

---

*30.04. - 03.05.2026*

***RIGA***   
***SUMMER***  
***RACE 2026***



## *Welcome to WashCar Riga Summer Race 2026!*

*Dear participants, partners, guests, and motorsport fans,*

*It is a great pleasure to see so many familiar faces—and many new ones—gathered here in Riga, Bikernieki. This year marks the second year in a row that we meet for WashCar Riga Summer Race, and that continuity means a lot. It shows that this event is growing, gaining trust, and earning its place on the racing calendar. Bikernieki is not just a track—it's a symbol of Latvian motorsport history, passion, and competition. There is no better place to push limits, test skills, and celebrate racing culture than right here.*

*I would like to thank all the participants for the dedication, preparation, and courage it takes to line up at the start.*

*Thank you to our partners and sponsors, especially WashCar, for believing in this event and helping it grow. And thank you to the officials, marshals, and volunteers, whose work behind the scenes makes this racing festival possible.*

*To our spectators: your presence, energy, and enthusiasm are what truly bring this race alive. Enjoy the speed, the sound, and the atmosphere—because today is about competition, but also about community and shared passion. Let's make this edition even stronger, faster, and more memorable than the first.*

*Race hard, race fair, and most importantly—race safe. Welcome to WashCar Riga Summer Race 2026. Let the racing begin!*

*Janis Ducmanis*

## ORGANIZING TEAM

---



### ***Karina Grike***

- Organizer CEO / Strategic BRS development questions
- Tel: +371-29163498
- Email: [info@balticracingseries.eu](mailto:info@balticracingseries.eu)



### ***Jānis Ducmanis***

- LAF Council member / Strategic BRS development questions / Collaboration with ASN's / Documentation
- Tel: +371-29248576
- Email: [info@balticracingseries.eu](mailto:info@balticracingseries.eu)



### ***Andris Grikis***

- LAF Racing commission member / BRS sports advisor / Documentation
- Tel: +371-26399191
- Email: [info@balticracingseries.eu](mailto:info@balticracingseries.eu)



### ***Artūrs Virbulis***

- LAF press secretary / BRS media & social networking / TV broadcast / Marketing
- Tel: +371-26175814
- Email: [media@balticracingseries.eu](mailto:media@balticracingseries.eu)



### ***Piret Nigul***

- Chief secretary / Sporting Checks / Invoicing
- Tel: +372-5087676
- Email: [secretariat@balticracingseries.eu](mailto:secretariat@balticracingseries.eu)

# WASHCAR RIGA SUMMER RACE 2026 PROGRAM

## 30.APR Thursday

- 08:00 – 22:00 Teams arrival in Bikernieki, setting up paddock
- 12:00 – 20:00 Sporting Checks
- 12:30 – 20:00 Unofficial practice sessions [51-56]
  
- Bikernieki gates closes at 22:00

## 01.Mai Friday

- 08:00 – 21:00 Bikernieki race office opening hours
- 08:00 – 20:00 Sporting Checks & Scrutineering [all classes]
- 09:00 – 12:40 Unofficial practice sessions [57-59]
- 13:45 – 19:40 Free practice & Qualifying sessions [BaTCC, NEa, HEC, MB]
- Bikernieki gates closes at 23:00

## 02.Mai Saturday

- 08:00 – 22:00 Bikernieki race office opening hours
- 09:00 – 20:00 Sporting Checks & Scrutineering
- 09:00 – 20:30 Free practice & Qualifying sessions [MB, FH]
- 09:00 – 20:30 Race sessions [BaTCC, NEa, HEC, MB]
- Bikernieki gates closes at 23:00

## 03.Mai Sunday

- 08:00 – 19:00 Bikernieki race office opening hours
- 08:00 – 09:00 Sporting Checks & Scrutineering [BaTa & LTCC-B only]
- 08:45 – 20:00 Practice, Qualifying and Race sessions [BaTa, FH, LTCC-B]

## ***ARRIVAL TO BIKERNIEKI RACETRACK & CHECKING-IN***

---

# ***IMPORTANT***

- *Bikernieki racetrack facilities are officially available for WashCar RSR 2026 participants as from Thursday, 30.04.2026 at 09:00.*
- *Bikernieki main gates are planned to be open:*

<i>Thursday</i>	<i>08:00 – 22:00</i>
<i>Friday</i>	<i>08:00 – 23:00</i>
<i>Saturday</i>	<i>08:00 – 23:00</i>
<i>Sunday</i>	<i>08:00 – 22:00</i>
- *Teams' allocation in the paddock area will be organized strictly according to the paddock plan. Ignoring organizers' orders, penalty can be applied.*
- *BRS person in charge of paddock allocation is Andris Griķis [+371-26399191]*
- *Car trailers must be placed in the specially designated area in the Bikernieki racetrack territory. Placing trailers in the paddock, on the tarmac is NOT allowed, penalty can be applied.*
- *Sporting Checks will be organized in accordance with the official timetable of the event.*



# WASHCAR RIGA SUMMER RACE 2026

## Paddock Plan



- *PIT LANE zone for participants only*
- *PIT BOXes on PIT Lane for NEa & HEC teams as a priority*
- *Trailers are allowed to be parked only in the trailer parking area*

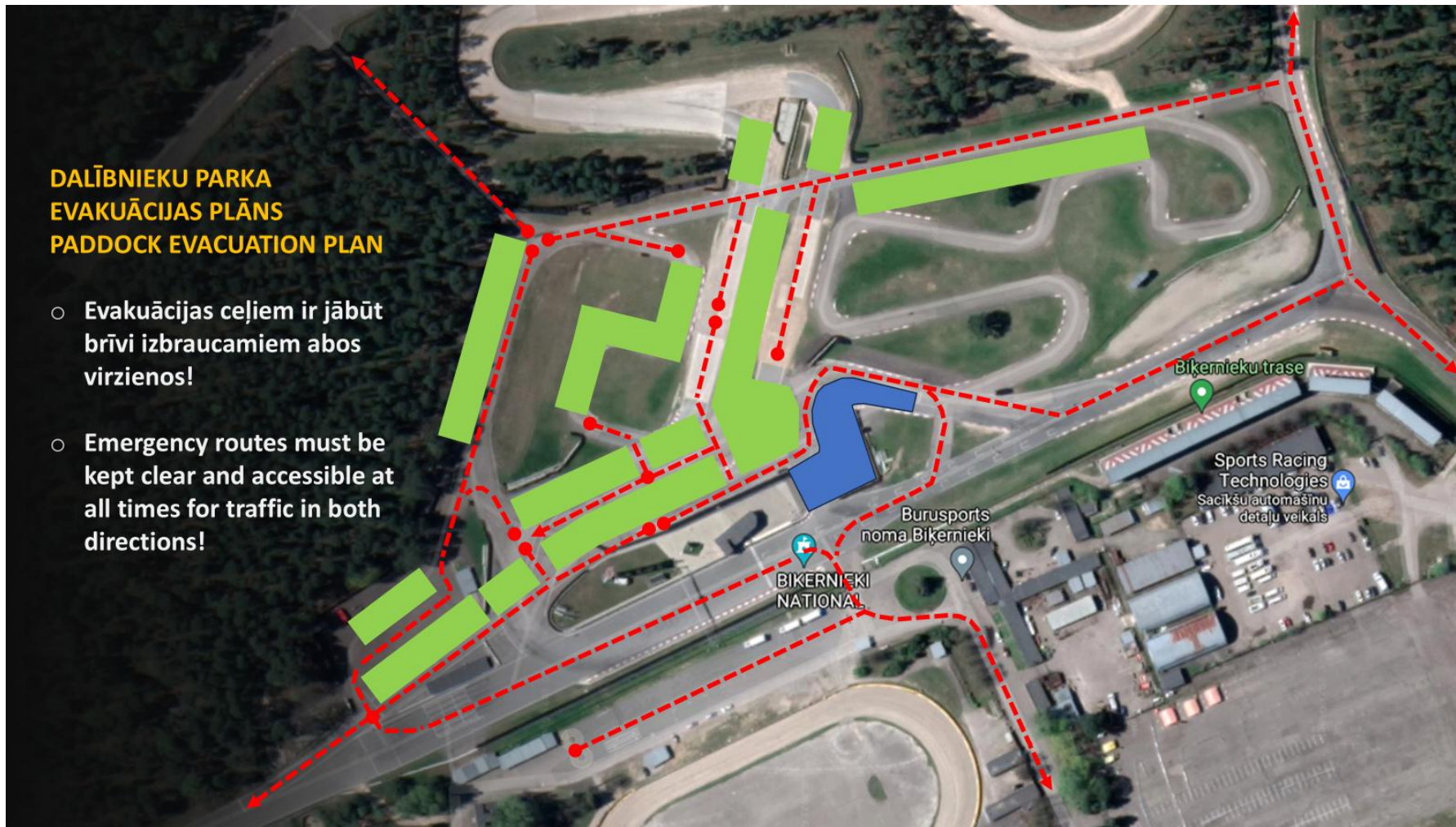


# WASHCAR RIGA SUMMER RACE 2026

## Paddock Evacuation Plan

### DALĪBNIEKU PARKA EVAKUĀCIJAS PLĀNS Paddock Evacuation Plan

- Evakuācijas ceļiem ir jābūt brīvi izbraucamiem abos virzienos!
- Emergency routes must be kept clear and accessible at all times for traffic in both directions!



- *Emergency routes must be kept clear and accessible at all times for traffic in both directions!*
- *Regular street cars of the team members must be parked on the grass*







## ***USED TIRES AND OLD OIL***

---



- *No used tires can be left in the Bikernieki racetrack after the event*

*Penalty: EUR 1000,-*

- *Used / old oil is NOT allowed to throw in the trash bins of the Bikernieki racetrack facilities*

*Penalty: EUR 1000,-*

*OFFICIAL  
COMMUNICATION  
CHANNEL*

---

*Sportify APP*



*Password:*

**BATCC2026**

*Content:*

- *Relevant documentation*
- *Decisions by Race Control*
- *Organizers` announcements*
- *Results*

---

**GENERAL SAFETY ON  
THE PIT LANE**



***NO KIDS ALLOWED***

*Only licenced drivers, team members or officials  
may enter the PIT LANE*



***NO BIKES ALLOWED***

*No scooters, bicycles, skateboards or similar  
devices*



***NO PETS ALLOWED***



## **GENERAL BEHAVIOR EXPECTATIONS**

---

- *Respect All Event Officials: Participants and attendees must follow the instructions of race directors, marshals, stewards, and security personnel at all times.*
- *Disciplinary Action: Non-compliance may lead to penalties, disqualification, or removal from the premises.*
- *Be Respectful: Treat all fellow participants, staff, and spectators with courtesy and respect.*
- *Keep Areas Clean: Dispose of waste properly and help maintain a clean environment.*
- *No Aggressive Behavior: Aggressive language, threats, or violence will not be tolerated.*
- *Photography & Filming: Follow any restrictions on media use and always respect privacy and safety.*

## ***FIRE SAFETY EQUIPMENT***

---

- *Fire Safety Compliance: All teams and attendees are expected to follow these fire safety protocols without exception.*
- *Mandatory Fire Extinguishers: Every participant is required to have a fire extinguisher accessible at their paddock area or garage.*
- *Usability Requirement: The extinguisher must be operational and easily usable by any person nearby in the event of an emergency*

# OFFICIAL TIMETABLE OF THE EVENT

*Thursday, April 30*

SESSION			PAUSE		
START	DURATION	END			
12:30	07:30	20:00			
Unofficial practice sessions (S1-S9 = EUR 300)					
Unofficial practice sessions (S4-S9 = EUR 250)					
Unofficial practice sessions (S7-S9 = EUR 200)					
12:30	00:20	12:50	00:05	Group 1 (Group H / V1600, ABC Race, BTC1, BTC2. BTC2 Light, BTC3 Light)	
12:55	00:20	13:15	00:05	Group 2 (BMW 325, Mitjet Baltics)	S1
13:20	00:20	13:40	00:05	Group 3 (BMW Turbo, BTC3, BTC4, GT AM, GT AM+, GT PRO)	
13:45	00:20	14:05	00:05	Group 1 (Group H / V1600, ABC Race, BTC1, BTC2. BTC2 Light, BTC3 Light)	
14:10	00:20	14:30	00:05	Group 2 (BMW 325, Mitjet Baltics)	S2
14:35	00:20	14:55	00:05	Group 3 (BMW Turbo, BTC3, BTC4, GT AM, GT AM+, GT PRO)	
15:00	00:20	15:20	00:05	Group 1 (Group H / V1600, ABC Race, BTC1, BTC2. BTC2 Light, BTC3 Light)	
15:25	00:20	15:45	00:05	Group 2 (BMW 325, Mitjet Baltics)	S3
15:50	00:20	16:10	00:05	Group 3 (BMW Turbo, BTC3, BTC4, GT AM, GT AM+, GT PRO)	
16:15	00:20	16:35	00:05	Group 1 (Group H / V1600, ABC Race, BTC1, BTC2. BTC2 Light, BTC3 Light)	
16:40	00:20	17:00	00:05	Group 2 (BMW 325, Mitjet Baltics)	S4
17:05	00:20	17:25	00:05	Group 3 (BMW Turbo, BTC3, BTC4, GT AM, GT AM+, GT PRO)	
17:30	00:20	17:50	00:05	Group 1 (Group H / V1600, ABC Race, BTC1, BTC2. BTC2 Light, BTC3 Light)	
17:55	00:20	18:15	00:05	Group 2 (BMW 325, Mitjet Baltics)	S5
18:20	00:20	18:40	00:05	Group 3 (BMW Turbo, BTC3, BTC4, GT AM, GT AM+, GT PRO)	
18:45	00:20	19:05	00:05	Group 1 (Group H / V1600, ABC Race, BTC1, BTC2. BTC2 Light, BTC3 Light)	
19:10	00:20	19:30	00:05	Group 2 (BMW 325, Mitjet Baltics)	S6
19:35	00:20	19:55	00:05	Group 3 (BMW Turbo, BTC3, BTC4, GT AM, GT AM+, GT PRO)	



# OFFICIAL TIMETABLE OF THE EVENT

*Friday, May 1*

SESSION			PAUSE		
START	DURATION	END			
09:00	00:20	09:20	00:05	Group 1 (Group H / V1600, ABC Race, BTC1, BTC2. BTC2 Light, BTC3 Light)	
09:25	00:20	09:45	00:05	Group 2 (BMW 325, Mitjet Baltics)	S7
09:50	00:20	10:10	00:05	Group 3 (BMW Turbo, BTC3, BTC4, GT AM, GT AM+, GT PRO)	
10:15	00:20	10:35	00:05	Group 1 (Group H / V1600, ABC Race, BTC1, BTC2. BTC2 Light, BTC3 Light)	
10:40	00:20	11:00	00:05	Group 2 (BMW 325, Mitjet Baltics)	S8
11:05	00:20	11:25	00:05	Group 3 (BMW Turbo, BTC3, BTC4, GT AM, GT AM+, GT PRO)	
11:30	00:20	11:50	00:05	Group 1 (Group H / V1600, ABC Race, BTC1, BTC2. BTC2 Light, BTC3 Light)	
11:55	00:20	12:15	00:05	Group 2 (BMW 325, Mitjet Baltics)	S9
12:20	00:20	12:40	00:05	Group 3 (BMW Turbo, BTC3, BTC4, GT AM, GT AM+, GT PRO)	
12:45	01:00	13:45	00:00	Lunch break	
13:00	00:30	13:30		Drivers briefing (BaTCC, NEA, HEC, MB)	
13:45	00:15	14:00	00:05	V1600 / ABC RACE	FP1
14:05	00:15	14:20	00:05	Group H / BTC1 / BTC 2 / BTC2 Light / BTC 3 / BTC3 Light	FP1
14:25	00:15	14:40	00:05	GT AM / GT AM+ / GT PRO	FP1
14:45	00:15	15:00	00:05	BMW 325 CUP	FP1
15:05	00:15	15:20	00:05	BMW TURBO CUP	FP1
15:25	00:25	15:50	00:05	NEA + HEC	QP1
15:55	00:15	16:10	00:05	V1600 / ABC RACE	FP2
16:15	00:15	16:30	00:05	Group H / BTC1 / BTC 2 / BTC2 Light / BTC 3 / BTC3 Light	FP2
16:35	00:15	16:50	00:05	GT AM / GT AM+ / GT PRO	FP2
16:55	00:15	17:10	00:05	BMW 325 CUP	FP2
17:15	00:15	17:30	00:05	BMW TURBO CUP	FP2
17:35	00:15	17:50	00:05	GT AM / GT AM+ / GT PRO	Q
17:55	00:15	18:10	00:05	Group H / BTC1 / BTC 2 / BTC2 Light / BTC 3 / BTC3 Light / V1600	Q
18:15	00:15	18:30	00:05	BMW 325 CUP	Q
18:35	00:15	18:50	00:05	BMW TURBO CUP	Q
18:55	00:25	19:20	00:05	NEA + HEC	QP2
19:25	00:15	19:40	00:00	MITJET BALTICS	FP

# OFFICIAL TIMETABLE OF THE EVENT

*Saturday, May 2*

SESSION			PAUSE		
START	DURATION	END			
09:00	00:15	09:15	00:15	MITJET BALTICS	Q 15 min
09:30	00:30	10:00	00:00	<i>Grand opening (Car parade + photo session on the grid)</i>	
10:00	00:25	10:25	00:10	V1600 / ABC RACE	R1 15 min
10:35	00:25	11:00	00:10	Group H / BTC1 / BTC 2 / BTC2 Light / BTC 3 / BTC3 Light	R1 15 min
11:10	00:25	11:35	00:10	GT AM / GT AM+ / GT PRO	R1 20 min
11:45	00:25	12:10	00:10	BMW 325 CUP	R1 15 min
12:20	00:25	12:45	00:10	BMW TURBO CUP	R1 20 min
12:55	00:25	13:20	00:10	MITJET BALTICS	R1 15 min
13:30	00:15	13:45	00:00	FORMULA HISTORIC	FP
13:45	00:30	14:15	00:00	<i>Lunch break</i>	
14:15	00:25	14:40	00:10	V1600 / ABC RACE	R2 15 min
14:50	00:25	15:15	00:10	Group H / BTC1 / BTC 2 / BTC2 Light / BTC 3 / BTC3 Light	R2 15 min
15:25	00:25	15:50	00:10	GT AM / GT AM+ / GT PRO	R2 20 min
16:00	00:25	16:25	00:10	BMW 325 CUP	R2 15 min
16:35	00:25	17:00	00:10	BMW TURBO CUP	R2 20 min
17:10	00:25	17:35	00:05	MITJET BALTICS	R2 15 min
17:40	00:15	17:55	00:05	<i>NEA + HEC grid time</i>	
18:00	02:00	20:00	00:10	NEA + HEC	R 2h
20:10	00:15	20:25	00:05	FORMULA HISTORIC	Q

# OFFICIAL TIMETABLE OF THE EVENT

*Sunday, May 3*

SESSION			PAUSE			
START	DURATION	END				
09:00	-	09:40			<i>Drivers briefing (BaTA, FH, LTCC-B)</i>	
10:00	00:25	10:25	00:05		BaTA unofficial practice session (50 EUR)	
10:30	00:20	10:50	00:10		LTCC-B	FP1
11:00	01:00	12:00	00:10		BaTA	S1 1h
11:00	00:20	11:20	00:00		Group 1	
11:20	00:20	11:40	00:00		Group 2	
11:40	00:20	12:00	00:00		Group 3	
12:10	00:20	12:30	00:10		LTCC-B	Q
12:40	00:25	13:05	00:00		FORMULA HISTORIC	R1 15 min
13:05	00:40	13:45	00:00		<i>Lunch break</i>	
13:45	01:00	14:45	00:05		BaTA	S2 1h
13:45	00:20	14:05	00:00		Group 1	
14:05	00:20	14:25	00:00		Group 2	
14:25	00:20	14:45	00:00		Group 3	
14:50	00:25	15:15	00:10		LTCC-B	R1 15 min
15:25	00:25	15:50	00:10		FORMULA HISTORIC	R2 15 min
16:00	01:00	17:00	00:10		BaTA	S3 1h
16:00	00:20	16:20	00:00		Group 1	
16:20	00:20	16:40	00:00		Group 2	
16:40	00:20	17:00	00:00		Group 3	
17:10	00:25	17:35	00:10		LTCC-B	R2 15 min



***GOOD LUCK!***

